

# 36" professional series



PRO36RBI

## MODELS AVAILABLE

Natural Gas (NG) PRO36RBIN Pro Series 36" built in grill w/ rotisserie – NG  
PRO36BIN Pro Series 36" built in grill – NG  
Liquid Propane (LP) PRO36RBIL Pro Series 36" built in grill w/ rotisserie – LP  
PRO36BIL Pro Series 36" built in grill – LP

## 36" GRILL FEATURES

American made  
100% stainless steel construction  
Three 20,000 BTU stainless steel burners  
15,000 BTU rotisserie burner (RBI Model)  
Stainless steel grates  
Stainless steel radiant trays for even heat distribution  
Full width and extra deep drip pan tray  
Chrome plated metal knobs

## 36" GRILL FEATURES (continued)

Precision brass valves  
Steel bezels  
Chrome plated metal handle end caps  
25 lb capacity rotisserie motor  
Stainless steel rotisserie forks  
Integrated rotisserie rod  
Temperature gauge  
Double lined hood  
Warming rack  
Electronic ignition (batteries required)  
Recessed sides for seamless installations  
Flash tubes for match lighting  
Available in NG or LP



Chrome plated metal knobs and steel bezels



Stainless steel rod grates



Stainless steel radiant trays and 20,000 BTU burners

### SHIPPING WEIGHT

175 LBS

### ELECTRICAL NEEDS

120 V 60 HZ

### GAS NEEDS

Natural Gas (NG) 4" W.C. operational pressure 1/2" NPT w/ 3/8" flare adaptor  
 Liquid Propane (LP) 11" W.C. operational pressure LP hose w/ quick disconnect  
 1/2" NPT w/ 3/8" flare adaptor

### AVAILABLE ACCESSORIES

- CCE36AD - 36"W double access doors
- CCE32AD - 32"W double access doors
- CCE26AD - 26"W double access doors
- CCE24ADVS - 24"H single access door w/ louvers
- CCE20ADVS - 20"H single access door
- CCE24ADHS - 24"W single access door
- CCE20ADHS - 20"W single access door
- CCEIDRWS - single drawer
- CCE2DRWS - double drawer

### AVAILABLE ACCESSORIES (continued)

- CCE3DRWS - triple drawer
- CCEPD24SS - slide out propane tank/trash drawer
- CCE30CDSS - slide out cooler drawer w/ 48 QT cooler

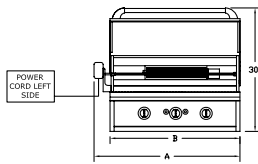
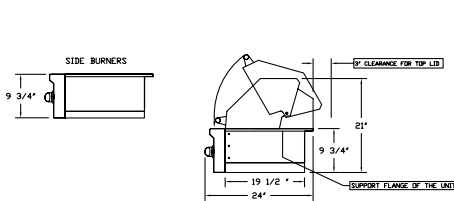
### COMPLIMENTARY PRODUCTS



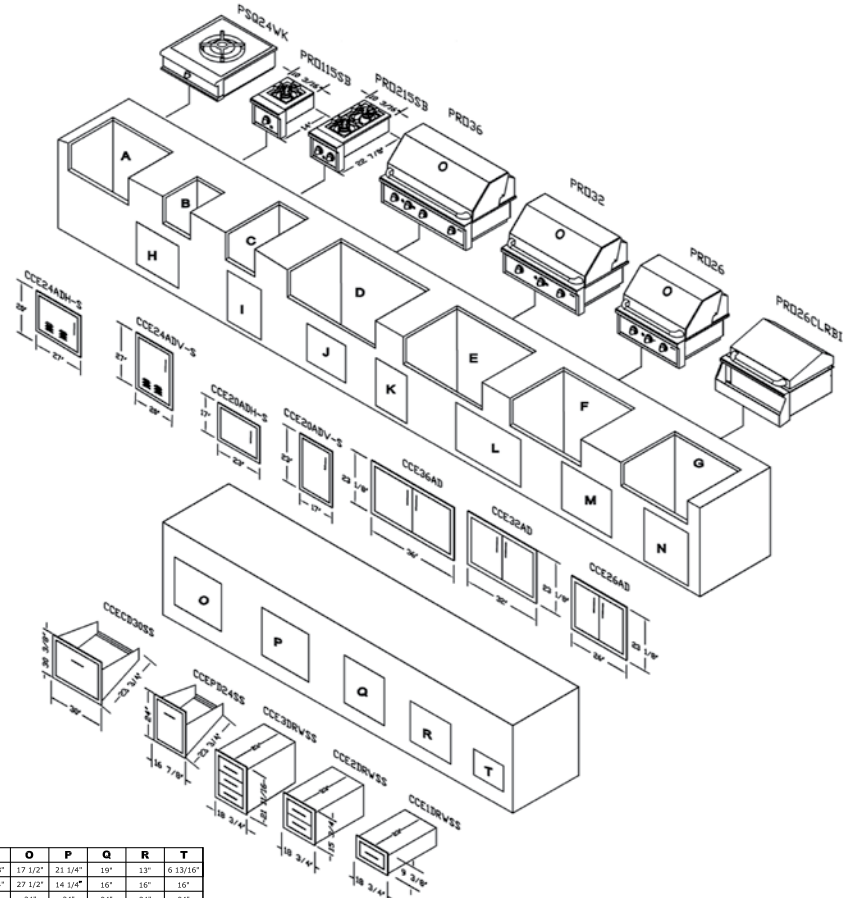
PROSB15 - 15,000 BTU single side burner      PROSB30 - 30,000 BTU double side burner

- Insulated jackets for combustible islands
- 26CLRBI - 26" cocktail station w/ condiment trays
- PRO26CLR-FRT - 26" pro cooler front
- CCE36VCBI - 36" grill vinyl cover
- PRO26CHBI - 26" stainless charcoal BBQ w/ lift
- PRO32CHBI - 32" stainless charcoal BBQ w/ lift

### CABINET PREPARATION



UNIT	A	B
PRO26	31 1/2"	26 7/8"
PRO32	37 1/2"	32 7/8"
PRO36	43 7/8"	36 7/8"



PROFESSIONAL GRILLS																			
CUT-OUT	A	B	C	D	E	F	G	H	I	J	K	L	M	N	O	P	Q	R	T
HEIGHT	10"	9 1/4"	9 1/4"	9 1/4"	9 1/4"	9 1/4"	10"	17 3/8"	24 3/8"	14 3/8"	20 3/8"	20 3/8"	20 3/8"	20 3/8"	17 1/2"	21 1/4"	19"	13"	6 13/16"
WIDTH	26 3/4"	8 3/4"	8 3/4"	35 1/2"	31 1/2"	25 1/2"	26 3/4"	24 5/16"	17 3/8"	20 5/16"	14 3/8"	33 1/4"	29 3/4"	23 1/4"	27 1/2"	14 1/4"	16"	16"	16"
DEPTH	19 1/2"	10"	18 7/8"	19 1/4"	19 1/4"	19 1/4"	19 1/2"								24"	24"	24"	24"	24"



Capital Cooking Equipment Inc.  
 13211 Florence Ave.  
 Santa Fe Springs, CA 90670

Phone: 562-903-1168  
 Toll Free: 866-402-4600  
 email: customerservice@capital-cooking.com

Made in the U.S.A.  
 Visit our web site: www.capital-cooking.com  
 © 2006 Capital Cooking Equipment, Inc.